

MINI STORAGE FACILITY

1. THIS BUILDING HAS BEEN DESIGNED AS TYPE-III NON-CONCRETE IN ACCORDANCE WITH FBC-2014 CHAPTER 5 & 6 REQUIREMENTS.

2. ALL INSULATION SHALL BE TYPICAL AND BE ACoustICAL UNLESS A HIGHER FLAME SPREAD IS SHOWN ON THE FOLLOWING EXCEPTED:

3. INSULATION SHALL BE TYPICAL UNLESS OTHERWISE SPECIFIED. INSULATION SHALL BE TYPICAL UNLESS OTHERWISE SPECIFIED BY OTHER EXCEPTS PER FBC-2014.

4. BUILDING DESIGN ASSUMES THAT THE OFFICE AREA OF ACCESSORY IS TO BE USED AS A STORAGE AREA FOR THE STORAGE OF THE BUILDING PER FBC-2014.

5. TO ALLOW PUBLIC ACCESS TO THE BUILDING BY OFFICE AREA OFFICE AREA SHALL BE OPEN TO THE PUBLIC AND SHALL BE OPEN TO THE PUBLIC AND ACCESS TO THE PUBLIC SHALL BE OPEN TO THE PUBLIC.

6. AS ADDITIONAL, ALL UNITS BARRIERS WILL BE LOCATED IN BUILDING TO BE OPEN TO THE PUBLIC AND SHALL BE OPEN TO THE PUBLIC.

BUILDING CONSTRUCTION REQUIREMENTS FBC-2014

CONSTRUCTION TYPE	TYPE III
CONSTRUCTION CODE	FBC 2014
AREA IDENTIFICATION	MINI STORAGE FACILITY

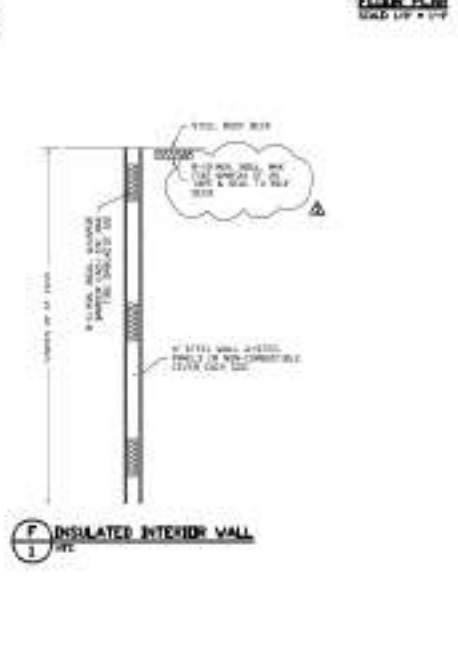
WALL LOCATION	REQUIREMENTS	REQUIREMENTS	REQUIREMENTS
WEST WALL	TYPE III	TYPE III	TYPE III
EAST WALL	TYPE III	TYPE III	TYPE III
NORTH WALL	TYPE III	TYPE III	TYPE III
SOUTH WALL	TYPE III	TYPE III	TYPE III

COMPONENT AND CLASSING PRESSURE (PSF)

WIND	DIR-1	DIR-2	DIR-3	DIR-4	DIR-5
WIND	15	15	15	15	15
WIND	15	15	15	15	15

OCCUPANT LOAD CALCS

ROOM	NET AREA	OCCUPANT	FRESH AIR
STORAGE UNIT	4000 SF	4000 / 100 = 40	1.0 CFM
STORAGE UNIT	4000 SF	4000 / 100 = 40	1.0 CFM



- SMALL RED ORDINANCE CHECK LIST**
- 1. ALL EXISTING WALLS TO BE DEMOLISHED WITH APPROVED CONTRACTOR.
 - 2. ALL EXISTING WALLS TO BE DEMOLISHED WITH APPROVED CONTRACTOR.
 - 3. ALL EXISTING WALLS TO BE DEMOLISHED WITH APPROVED CONTRACTOR.
 - 4. ALL EXISTING WALLS TO BE DEMOLISHED WITH APPROVED CONTRACTOR.
 - 5. ALL EXISTING WALLS TO BE DEMOLISHED WITH APPROVED CONTRACTOR.
 - 6. ALL EXISTING WALLS TO BE DEMOLISHED WITH APPROVED CONTRACTOR.
 - 7. ALL EXISTING WALLS TO BE DEMOLISHED WITH APPROVED CONTRACTOR.
 - 8. ALL EXISTING WALLS TO BE DEMOLISHED WITH APPROVED CONTRACTOR.
 - 9. ALL EXISTING WALLS TO BE DEMOLISHED WITH APPROVED CONTRACTOR.
 - 10. ALL EXISTING WALLS TO BE DEMOLISHED WITH APPROVED CONTRACTOR.

VARIOUS PRODUCT APPROVALS

1. ALL EXISTING WALLS TO BE DEMOLISHED WITH APPROVED CONTRACTOR.

2. ALL EXISTING WALLS TO BE DEMOLISHED WITH APPROVED CONTRACTOR.

3. ALL EXISTING WALLS TO BE DEMOLISHED WITH APPROVED CONTRACTOR.

4. ALL EXISTING WALLS TO BE DEMOLISHED WITH APPROVED CONTRACTOR.

5. ALL EXISTING WALLS TO BE DEMOLISHED WITH APPROVED CONTRACTOR.

6. ALL EXISTING WALLS TO BE DEMOLISHED WITH APPROVED CONTRACTOR.

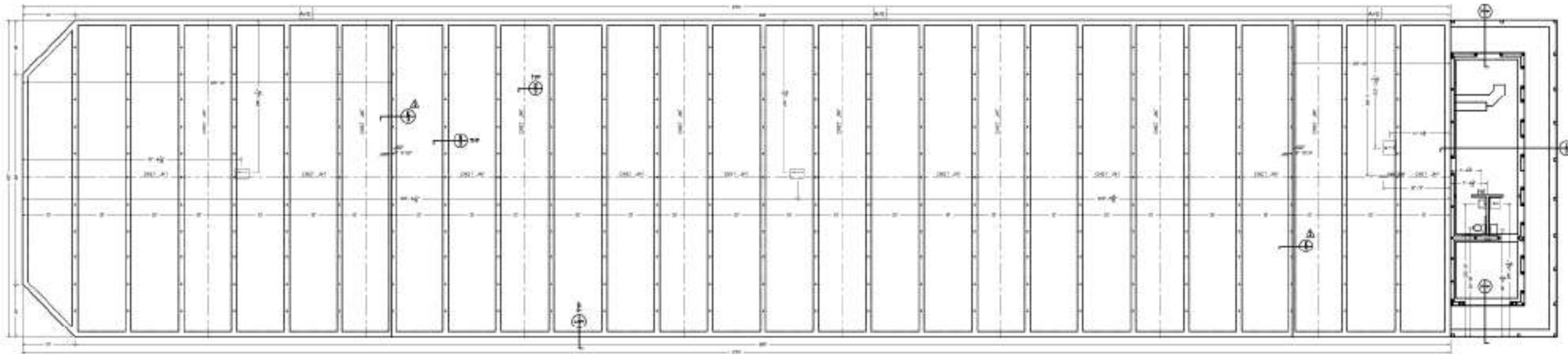
7. ALL EXISTING WALLS TO BE DEMOLISHED WITH APPROVED CONTRACTOR.

8. ALL EXISTING WALLS TO BE DEMOLISHED WITH APPROVED CONTRACTOR.

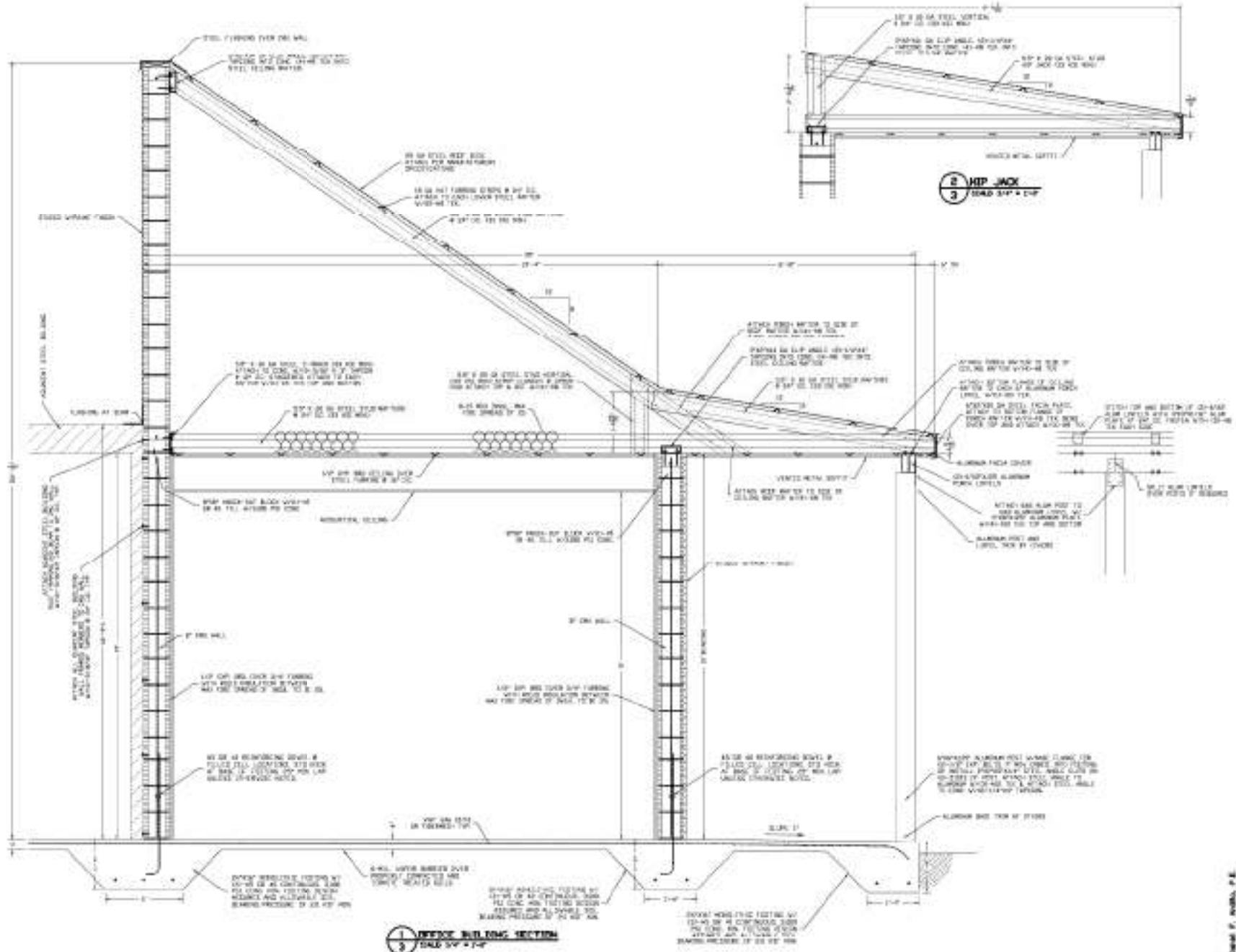
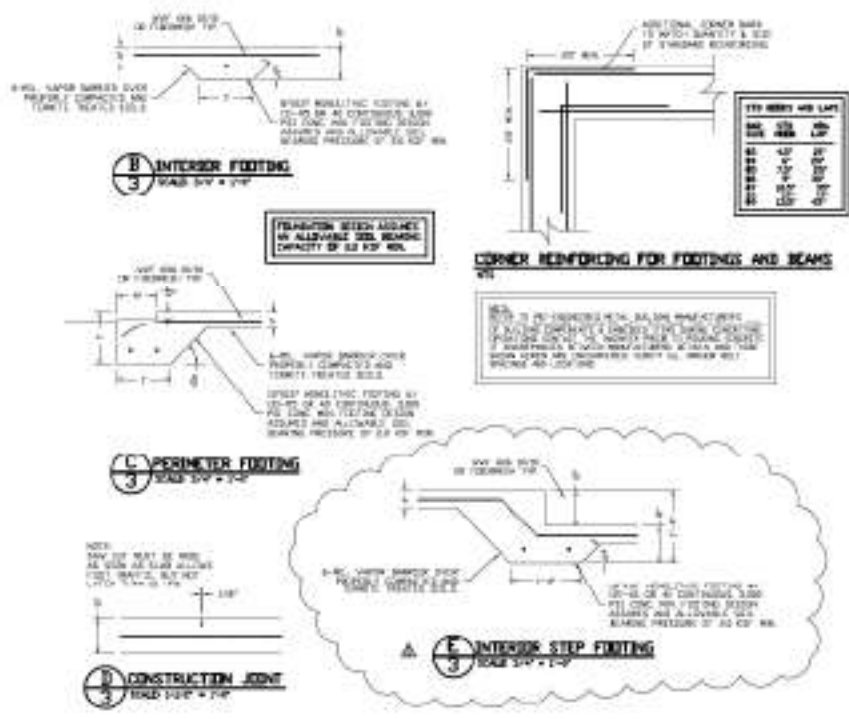
9. ALL EXISTING WALLS TO BE DEMOLISHED WITH APPROVED CONTRACTOR.

10. ALL EXISTING WALLS TO BE DEMOLISHED WITH APPROVED CONTRACTOR.

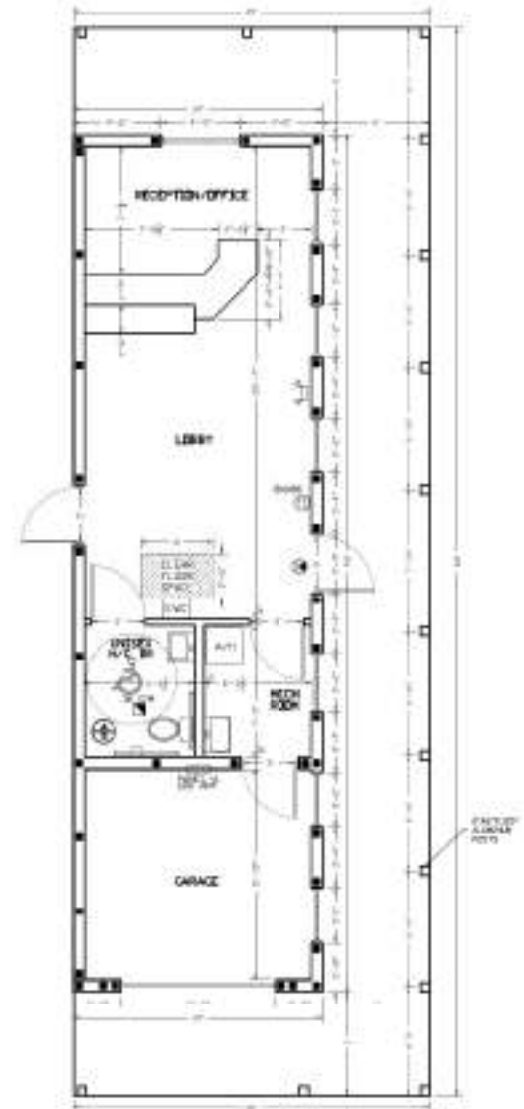
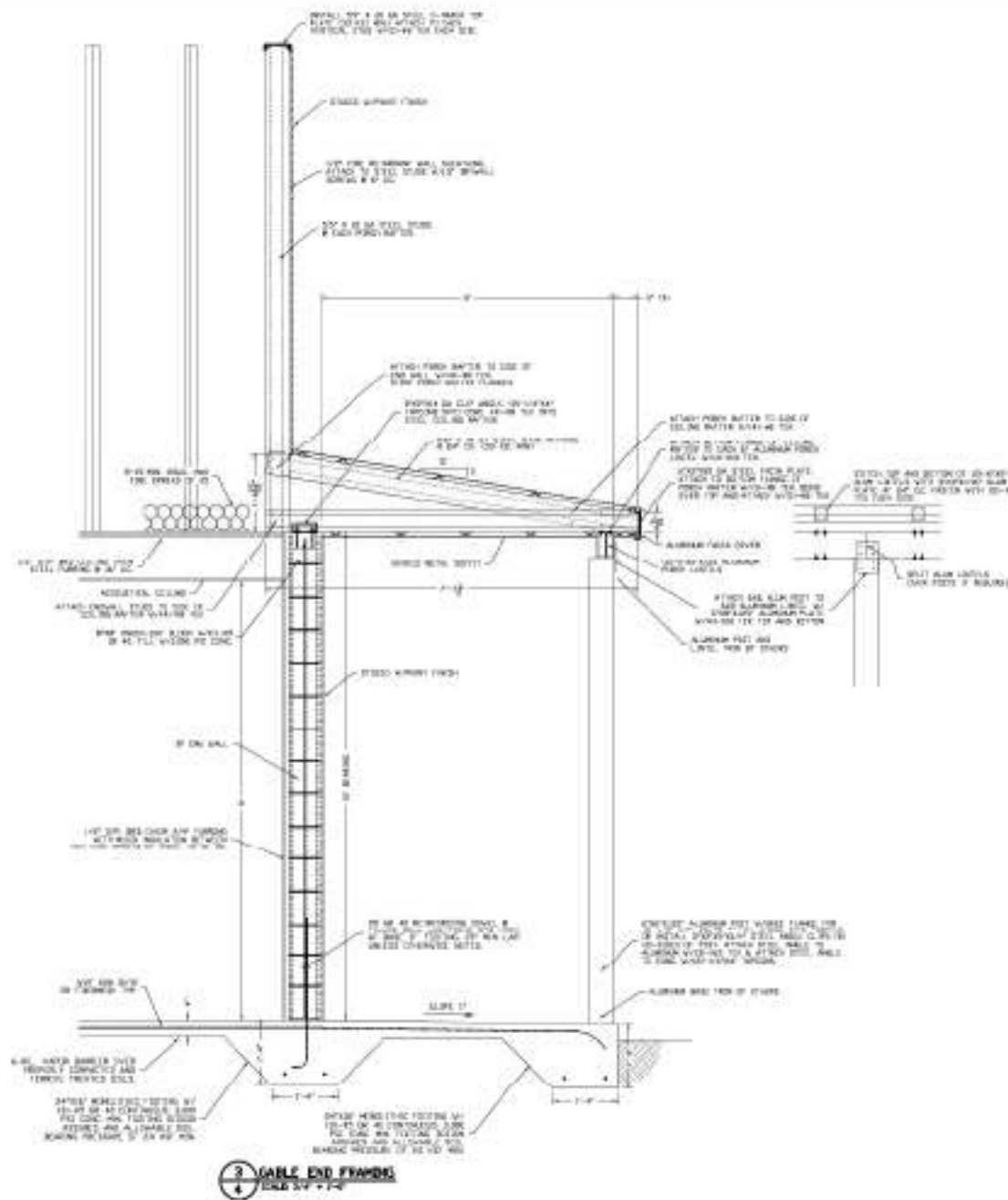




FOUNDATION PLAN
SCALE 1/4" = 1'-0"



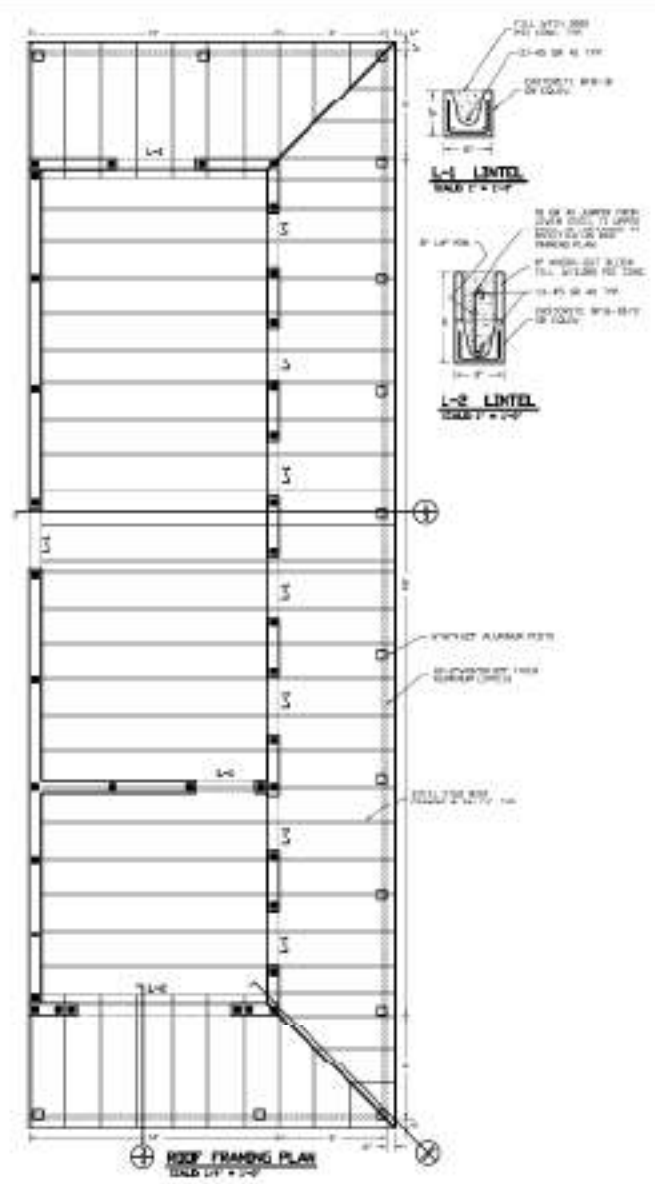
INTERIOR BUILDING SECTION
SCALE 1/4" = 1'-0"



ROOF FINISH SCHEDULE

ROOM NAME	WALLS	FLOOR	BASE	CEILING	ROOF
RECEPTION OFFICE	03	V01	0300	030	030
LOBBY	03	V01	0300	030	030
GARAGE	03	V01	0300	030	030
RESTROOM	03	V01	0300	030	030
STORAGE	03	V01	0300	030	030

1. ALL FINISHES SHALL BE AS SHOWN UNLESS OTHERWISE NOTED.
 2. FINISHES SHALL BE AS SHOWN UNLESS OTHERWISE NOTED.
 3. FINISHES SHALL BE AS SHOWN UNLESS OTHERWISE NOTED.
 4. FINISHES SHALL BE AS SHOWN UNLESS OTHERWISE NOTED.
 5. FINISHES SHALL BE AS SHOWN UNLESS OTHERWISE NOTED.



LIST OF ABBREVIATIONS

SYMBOL	DESCRIPTION
1	1/2" DIA. STEEL ROD
2	3/4" DIA. STEEL ROD
3	1" DIA. STEEL ROD
4	1 1/2" DIA. STEEL ROD
5	2" DIA. STEEL ROD
6	3" DIA. STEEL ROD
7	4" DIA. STEEL ROD
8	5" DIA. STEEL ROD
9	6" DIA. STEEL ROD
10	8" DIA. STEEL ROD
11	10" DIA. STEEL ROD
12	12" DIA. STEEL ROD
13	14" DIA. STEEL ROD
14	16" DIA. STEEL ROD
15	18" DIA. STEEL ROD
16	20" DIA. STEEL ROD
17	24" DIA. STEEL ROD
18	30" DIA. STEEL ROD
19	36" DIA. STEEL ROD
20	42" DIA. STEEL ROD
21	48" DIA. STEEL ROD
22	54" DIA. STEEL ROD
23	60" DIA. STEEL ROD
24	66" DIA. STEEL ROD
25	72" DIA. STEEL ROD
26	78" DIA. STEEL ROD
27	84" DIA. STEEL ROD
28	90" DIA. STEEL ROD
29	96" DIA. STEEL ROD
30	102" DIA. STEEL ROD
31	108" DIA. STEEL ROD
32	114" DIA. STEEL ROD
33	120" DIA. STEEL ROD
34	126" DIA. STEEL ROD
35	132" DIA. STEEL ROD
36	138" DIA. STEEL ROD
37	144" DIA. STEEL ROD
38	150" DIA. STEEL ROD
39	156" DIA. STEEL ROD
40	162" DIA. STEEL ROD
41	168" DIA. STEEL ROD
42	174" DIA. STEEL ROD
43	180" DIA. STEEL ROD
44	186" DIA. STEEL ROD
45	192" DIA. STEEL ROD
46	198" DIA. STEEL ROD
47	204" DIA. STEEL ROD
48	210" DIA. STEEL ROD
49	216" DIA. STEEL ROD
50	222" DIA. STEEL ROD
51	228" DIA. STEEL ROD
52	234" DIA. STEEL ROD
53	240" DIA. STEEL ROD
54	246" DIA. STEEL ROD
55	252" DIA. STEEL ROD
56	258" DIA. STEEL ROD
57	264" DIA. STEEL ROD
58	270" DIA. STEEL ROD
59	276" DIA. STEEL ROD
60	282" DIA. STEEL ROD
61	288" DIA. STEEL ROD
62	294" DIA. STEEL ROD
63	300" DIA. STEEL ROD
64	306" DIA. STEEL ROD
65	312" DIA. STEEL ROD
66	318" DIA. STEEL ROD
67	324" DIA. STEEL ROD
68	330" DIA. STEEL ROD
69	336" DIA. STEEL ROD
70	342" DIA. STEEL ROD
71	348" DIA. STEEL ROD
72	354" DIA. STEEL ROD
73	360" DIA. STEEL ROD
74	366" DIA. STEEL ROD
75	372" DIA. STEEL ROD
76	378" DIA. STEEL ROD
77	384" DIA. STEEL ROD
78	390" DIA. STEEL ROD
79	396" DIA. STEEL ROD
80	402" DIA. STEEL ROD
81	408" DIA. STEEL ROD
82	414" DIA. STEEL ROD
83	420" DIA. STEEL ROD
84	426" DIA. STEEL ROD
85	432" DIA. STEEL ROD
86	438" DIA. STEEL ROD
87	444" DIA. STEEL ROD
88	450" DIA. STEEL ROD
89	456" DIA. STEEL ROD
90	462" DIA. STEEL ROD
91	468" DIA. STEEL ROD
92	474" DIA. STEEL ROD
93	480" DIA. STEEL ROD
94	486" DIA. STEEL ROD
95	492" DIA. STEEL ROD
96	498" DIA. STEEL ROD
97	504" DIA. STEEL ROD
98	510" DIA. STEEL ROD
99	516" DIA. STEEL ROD
100	522" DIA. STEEL ROD
101	528" DIA. STEEL ROD
102	534" DIA. STEEL ROD
103	540" DIA. STEEL ROD
104	546" DIA. STEEL ROD
105	552" DIA. STEEL ROD
106	558" DIA. STEEL ROD
107	564" DIA. STEEL ROD
108	570" DIA. STEEL ROD
109	576" DIA. STEEL ROD
110	582" DIA. STEEL ROD
111	588" DIA. STEEL ROD
112	594" DIA. STEEL ROD
113	600" DIA. STEEL ROD
114	606" DIA. STEEL ROD
115	612" DIA. STEEL ROD
116	618" DIA. STEEL ROD
117	624" DIA. STEEL ROD
118	630" DIA. STEEL ROD
119	636" DIA. STEEL ROD
120	642" DIA. STEEL ROD
121	648" DIA. STEEL ROD
122	654" DIA. STEEL ROD
123	660" DIA. STEEL ROD
124	666" DIA. STEEL ROD
125	672" DIA. STEEL ROD
126	678" DIA. STEEL ROD
127	684" DIA. STEEL ROD
128	690" DIA. STEEL ROD
129	696" DIA. STEEL ROD
130	702" DIA. STEEL ROD
131	708" DIA. STEEL ROD
132	714" DIA. STEEL ROD
133	720" DIA. STEEL ROD
134	726" DIA. STEEL ROD
135	732" DIA. STEEL ROD
136	738" DIA. STEEL ROD
137	744" DIA. STEEL ROD
138	750" DIA. STEEL ROD
139	756" DIA. STEEL ROD
140	762" DIA. STEEL ROD
141	768" DIA. STEEL ROD
142	774" DIA. STEEL ROD
143	780" DIA. STEEL ROD
144	786" DIA. STEEL ROD
145	792" DIA. STEEL ROD
146	798" DIA. STEEL ROD
147	804" DIA. STEEL ROD
148	810" DIA. STEEL ROD
149	816" DIA. STEEL ROD
150	822" DIA. STEEL ROD
151	828" DIA. STEEL ROD
152	834" DIA. STEEL ROD
153	840" DIA. STEEL ROD
154	846" DIA. STEEL ROD
155	852" DIA. STEEL ROD
156	858" DIA. STEEL ROD
157	864" DIA. STEEL ROD
158	870" DIA. STEEL ROD
159	876" DIA. STEEL ROD
160	882" DIA. STEEL ROD
161	888" DIA. STEEL ROD
162	894" DIA. STEEL ROD
163	900" DIA. STEEL ROD
164	906" DIA. STEEL ROD
165	912" DIA. STEEL ROD
166	918" DIA. STEEL ROD
167	924" DIA. STEEL ROD
168	930" DIA. STEEL ROD
169	936" DIA. STEEL ROD
170	942" DIA. STEEL ROD
171	948" DIA. STEEL ROD
172	954" DIA. STEEL ROD
173	960" DIA. STEEL ROD
174	966" DIA. STEEL ROD
175	972" DIA. STEEL ROD
176	978" DIA. STEEL ROD
177	984" DIA. STEEL ROD
178	990" DIA. STEEL ROD
179	996" DIA. STEEL ROD
180	1002" DIA. STEEL ROD

